



The Christian Brothers'  
Agricultural  
School

Tardun  
Western Australia

*July*  
*Robert [unclear]*  
*8. 12. 26.*





His Lordship, The Most Rev. Dr. A. Catalan, O.S.B.,  
LORD ABBOT OF NEW NORCIA



His Grace, the Most Rev. Dr. Prendiville,  
ARCHBISHOP OF PERTH

## Patrons of the Scheme



His Lordship, The Most Rev. Dr. O'Collins  
BISHOP OF GERALDTON



# The Christian Brothers' Agricultural School

## Tardun, Western Australia

---

### REVIEW OF THE SCHOOL'S ACTIVITIES

For a period of nearly fifty years the Christian Brothers have been engaged in the meritorious work of looking after the spiritual and temporal needs of the Catholic orphaned boys of Western Australia. From the small beginning started in 1894, the good work has increased and multiplied to such an extent that, at the present time, we find four well co-ordinated institutions engaged in catering for the needs of our Catholic boys, some of whom the parents are dead, and are left unprovided for, and others whose parents possess but little of this world's goods.

The first of these institutions is known as **Castledare Junior Orphanage**. It is situated on the Canning River and is about five miles from Perth. The buildings, which cost £12,000, are substantial and in every way suited for their purpose. There are about fifty boys in the Junior Orphanage, ranging from six to ten years. They are looked after by a staff of Brothers, a matron and an assistant. Attached to this institution are seventy acres of land which is used for recreation grounds, vegetable gardens, and other useful purposes.

The property was purchased and the necessary buildings erected in 1928 by the late lamented

Archbishop, the Most Rev. Dr. Clune, whose anxiety for the spiritual and temporal welfare of the orphans was one of the outstanding characteristics of his life.

The boys are examined each year by an inspector from the Education Department and invariably receive good reports.

When the boys in this institution reach a specified standard, they are drafted to the Intermediate Orphanage.

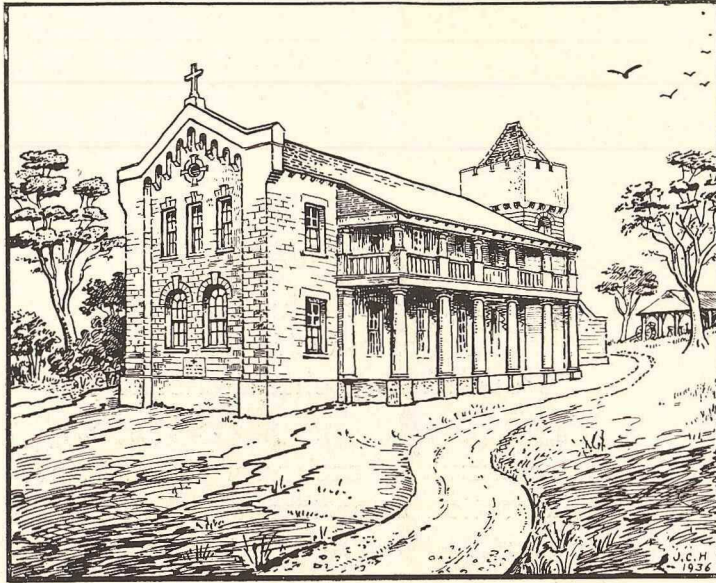
**The Intermediate Institution** is known as Clontarf Orphanage. It is situated on the Canning River about three miles from the Junior Orphanage, on the Fremantle side.

The buildings are spacious, up-to-date, and cost about £25,000 to erect. They are capable of accommodating over 200 boys.

Attached to this orphanage is a farm, consisting of 700 acres of land which is cleared and utilised for mixed farming.

The boys complete their primary education and manual training here; they are also trained in elementary farming methods.





EASTERN WING, NOW IN COURSE OF ERECTION

When the boys reach the age of fourteen years, those who show a special aptitude for farming and who are considered to possess the necessary intelligence to direct a farm of their own later on, are drafted to the Agricultural School at Tardun, where they are prepared for the Junior University Examination in agricultural science, physics, chemistry, mathematics, history, English, geography, art, wood and metal work.

Positions are found with farmers and others for the boys who do not proceed to the Agricultural School in Tardun.

The Junior and Intermediate Orphanages are under the patronage of His Grace the Most Rev. Dr. Prendiville, Archbishop of Perth, who, like his predecessor, the late Archbishop Clune, is keenly interested in all that concerns the spiritual and temporal welfare of the orphans.

The Senior Orphanage in Tardun is under the patronage of His Lordship, the Most Rev. Dr. O'Collins, Bishop of Geraldton, who has great confidence in the possibilities of the Tardun scheme for uplifting and bettering the rising generation.

**Tardun Agricultural School** owes its existence to the late Archbishop Clune and to many zealous Catholic laymen and women who co-operated with him in his efforts to better the conditions of the poor boys of his diocese, by opening up to them



Group of Trainees who are now Preparing for the Junior University Examinations



new avenues to success in life, by training them in farming methods. With this object in view, about 20,000 acres of wheat and grazing land was acquired from the Government in 1927 in the Tardun district which is a little over 300 miles north of Perth. The land was uncleared and practically without fences or water, and devoid of anything in the way of house or shed shelter.

The working of the scheme was handed over to the Christian Brothers, who undertook to direct it in conjunction with the Clontarf Orphanage, situated on the Canning River, near Perth.

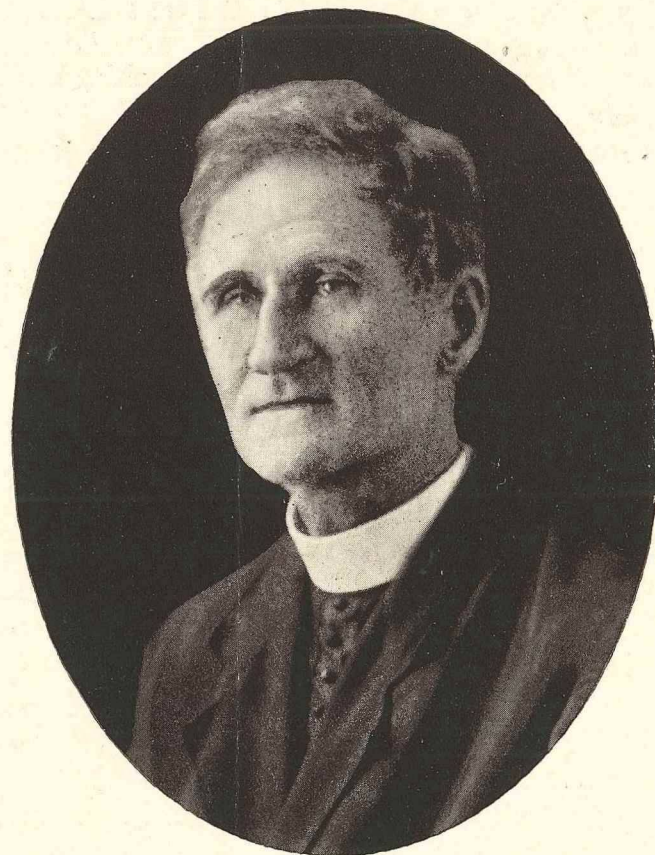
Clearing the empty spaces was soon undertaken on a large scale and proceeded with in a consistent manner, so that today there are 6000 acres cleared and capable of producing wheat, oats, barley, and root crops of all descriptions.

The whole property was boundary fenced, and many subdivisional fences were also erected. The water problem at first seemed serious, but after a few years of earnest effort the difficulty completely disappeared, owing to the sinking of wells, the erection of fourteen windmills, and the construction of a concrete dam with rock bottom in the centre of the property, which is capable of holding one million gallons.

As the clearing proceeded and the water supply increased, horses, cattle, sheep and pigs were introduced on a comparatively large scale.

Modern machinery connected with mixed farm-

THE VERY REV. DEAN HAWES,



A Generous Benefactor to the Scheme



Mrs. C. MUSK



The Generous Donor of the Valuable Property known as

"Mt. Pleasant," Bindoon

ing, especially grain production, soon played a very important part in the developmental scheme, as may be gathered from the fact that 4000 acres have been seeded with wheat and oats this year. A similar area was under crop in 1934 and 1935.

A staff of twelve men are engaged in directing and carrying out the scheme, nine of whom are Brothers who are either certificated teachers or experts in some branch of farming.

Boys of good character and intelligence who show an aptitude and desire for farming in the Intermediate Orphanage, Clontarf, are drafted to Tardun when they have completed their primary education. Generally speaking, this occurs when they are between twelve and fourteen years of age.

Tardun is a registered school under the Department of Education, where boys receive a full-time course of instruction each day of school.

When the boys arrive from Clontarf, they are at once admitted to the school and commence a course in mathematics, English, history, geography, art, physics, chemistry, and agricultural science, wood and metal work.

The boys are expected to continue their studies until they secure a Junior University certificate.

In addition to attending school, the boys are expected to spend about two hours each day in practical farming.

When the trainees secure a certificate they are engaged in full-time field and other work.



The work in connection with the farm is many-sided. The trainees are engaged, according to the season, in ploughing, harrowing, seeding, scrub rolling, tractor and truck work, carting, cutting and binding, stripping, hay making, dairying, poultry farming, sheep, cattle, horse and pig raising, well-sinking, fencing, concrete work in dams, troughs and tanks, shearing, wool pressing, chaff cutting, etc.

The trainees, on finishing their school course, are paid weekly wages according to a scale approved of by the Child Welfare Department. The wages are sent to the latter department to be kept in trust until the boys attain the age of 21 years.

On reaching the age of 21, trainees who have impressed the Christian Brothers with the feeling that they will become capable and reliable farmers will be placed on probation as managers of farms under the supervision of the Brothers. The latter, if satisfied with a trainee after sufficient trial, will hand him over a farm on which a four-roomed cottage will have been erected.

In addition to the 20,000 acres already referred to, the Christian Brothers have acquired an additional 10,000 acres which, it is hoped, will be soon cut up into locations and handed over to deserving trainees.

The trainees who fail to reach the character and efficiency standard required of them will be provided with positions as farm hands. It may be here stated that applications for boys trained at Tardun are being constantly received from all parts of the State. Comparatively few boys are available

when the large number of applications is taken into consideration.

### **The Tardun Scheme Appreciated and Extended by a Generous Gift**

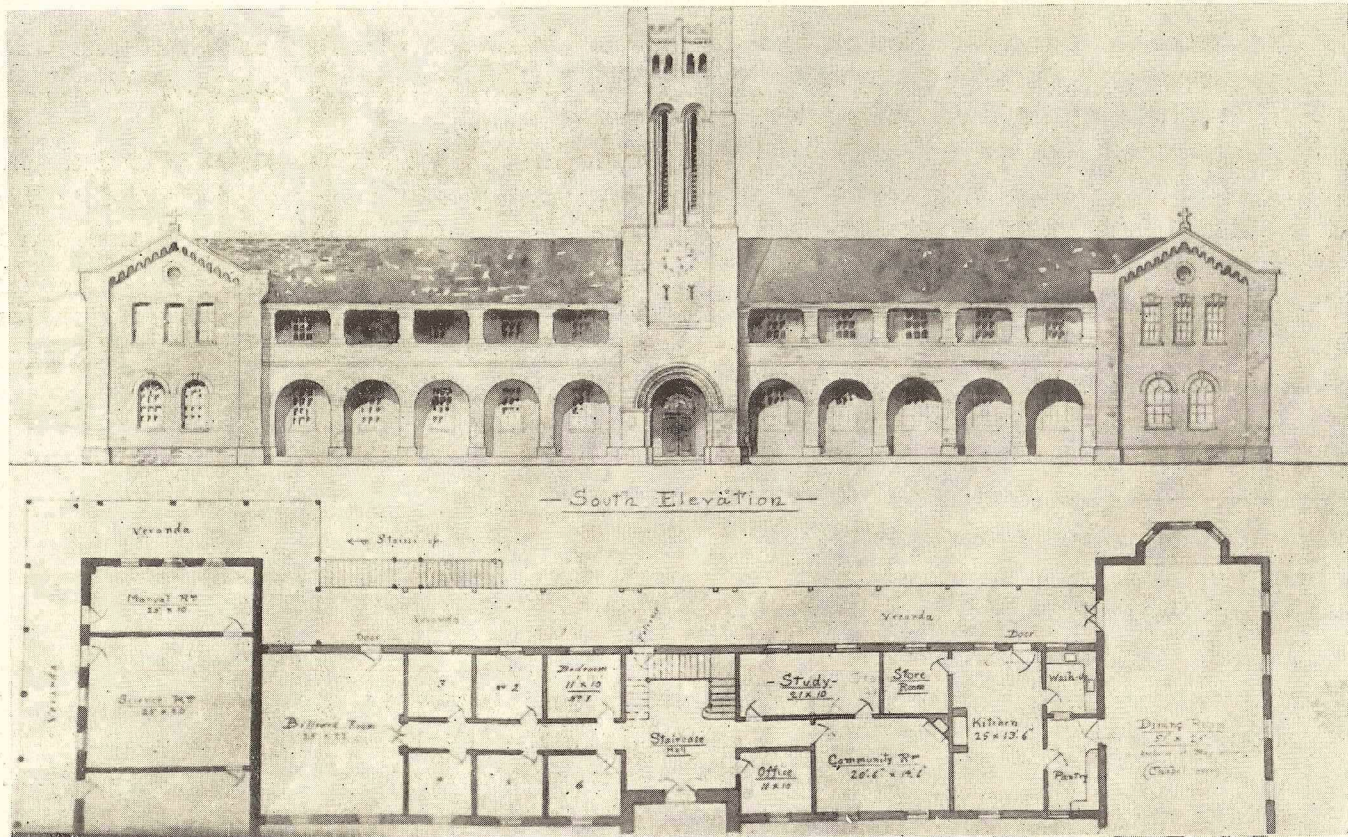
It is encouraging to all interested in the welfare of the orphans and especially to the Christian Brothers who, without any earthly reward, are devoting their lives to uplifting and bettering poor boys, to find that there are charitable and generous people willing to join with them in their efforts to maintain and extend this very meritorious work.

Recently, **Mrs. C. Musk, Mt. Lawley**, has handed over to the Christian Brothers the extensive and valuable property known as **Mt. Pleasant, Bindoon**, consisting of 17,000 acres, to be worked in conjunction with, and as part of, the Tardun scheme. "**Mt. Pleasant**" is sixty miles from Perth. The acquisition of this property will prove a very valuable asset to the work which the Brothers have undertaken in Tardun. It will give the senior trainees experience in a type of mixed farming which, in many respects, is very different from that in the north-western wheatbelt area where Tardun is situated. It will also serve as an advantageous change for stock, especially during dry periods.

In conclusion, it is appropriate to record the appreciation of the Christian Brothers and of all interested in the scheme of the very material help given by the Lotteries Commission in furthering its interests and inspiring confidence in those responsible for its maintenance under trying circumstances.

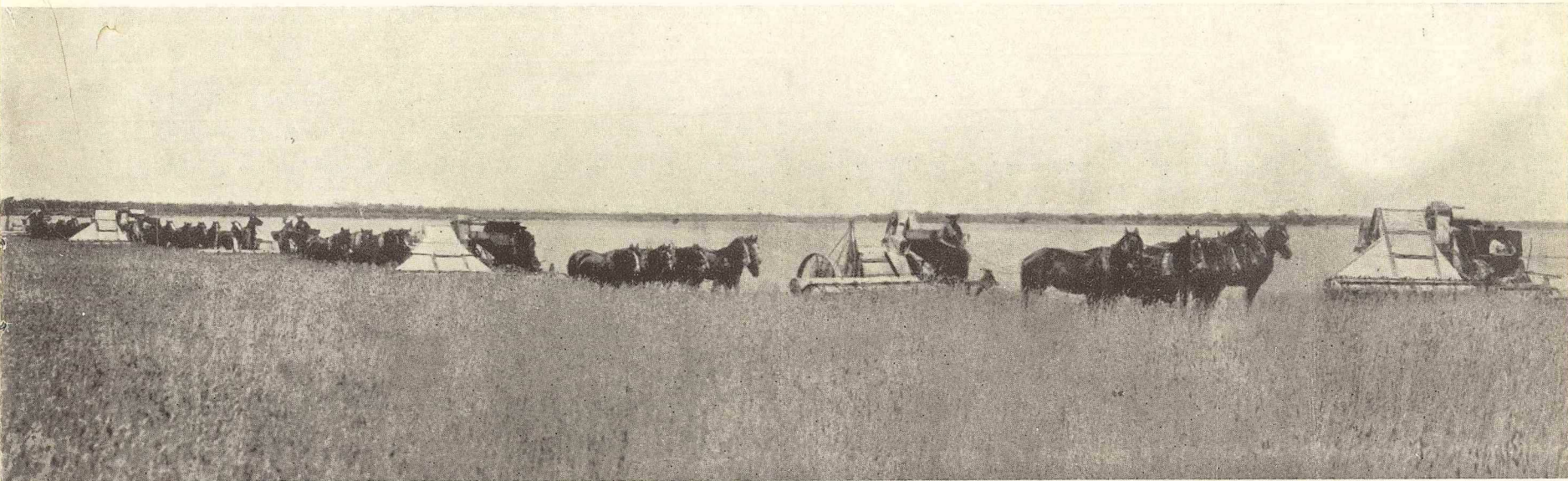


## The Christian Brothers' Proposed Agricultural School, Tardun, W.A.



[Architect: The Very Rev. Dean Hawes

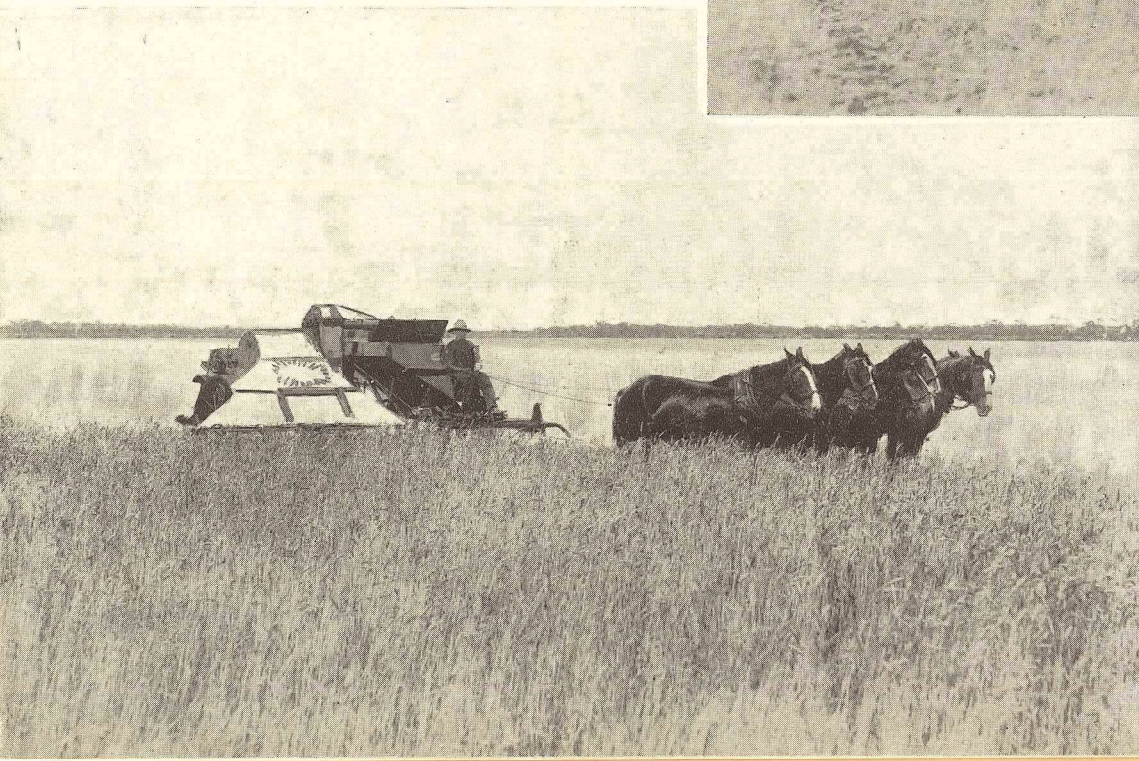




VIEWS OF THE FARM'S HARVESTERS IN ACTION



TEAMS EN ROUTE  
TO HARVESTERS



HARVESTER IN ACTION

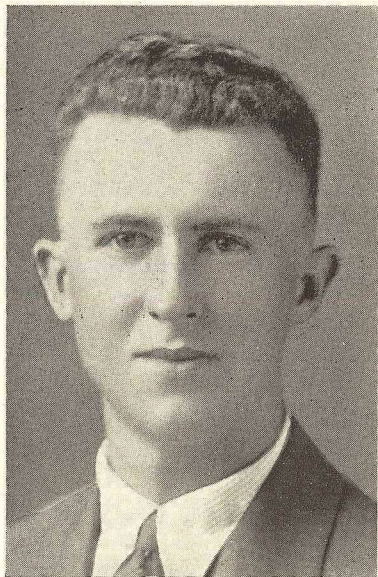




OPENING AND BLESSING OF THE FIRST TRAINEE'S COTTAGE



PORTION OF THE TARDUN FLOCK



H. DEAN

Tardun's First Graduate after having completed seven years' training.  
He now occupies the First Cottage erected under the Scheme.



One of the Combine Seeders en route to the Wheat Paddock





THE VALUABLE STALLION "BENITO BOY,"  
Donated to the Farm by the Very Rev. Dean Hawes



HAY STACKS



THE CHAPEL



ORIGINAL RESIDENCE





CONCRETE DAM, CAPABLE OF HOLDING A MILLION GALLONS  
Designed and Constructed by the Staff and Trainees





INTERMEDIATE ORPHANAGE, CLONTARF



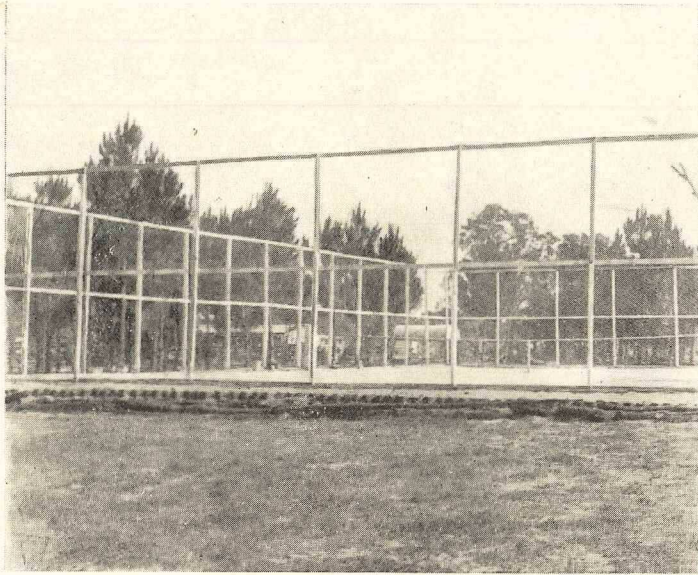


CLONTARF BAND

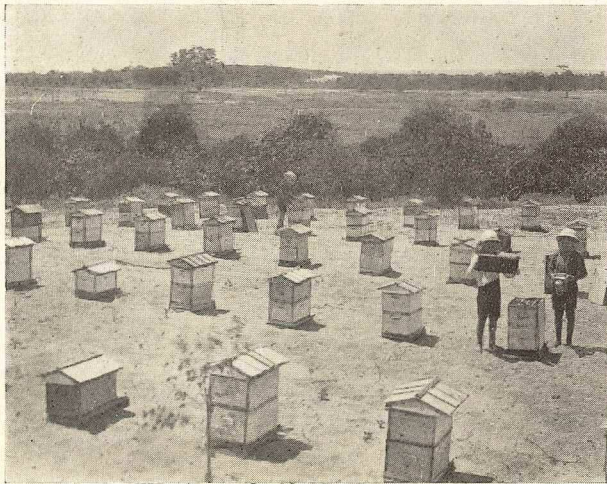


CLONTARF MANUAL ROOM





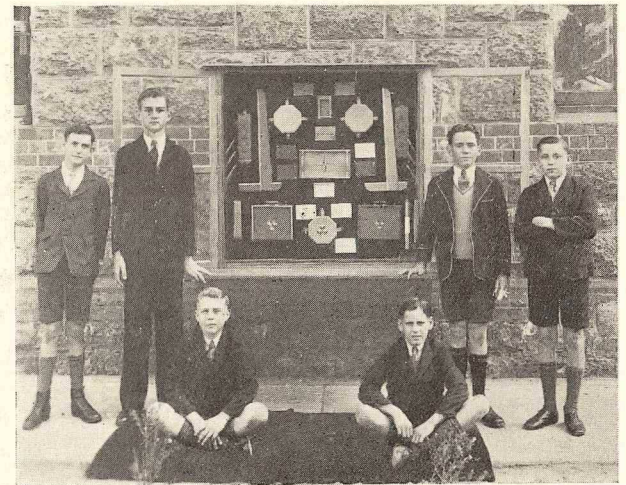
CLONTARF TENNIS COURTS



CLONTARF TRAINEES AT WORK AMONG THE BEEHIVES



CLONTARF GYMNASTIC CLASS



CLONTARF TRAINEES, WINNERS OF CHAMPIONSHIP PRIZES,  
ROYAL SHOW, 1936



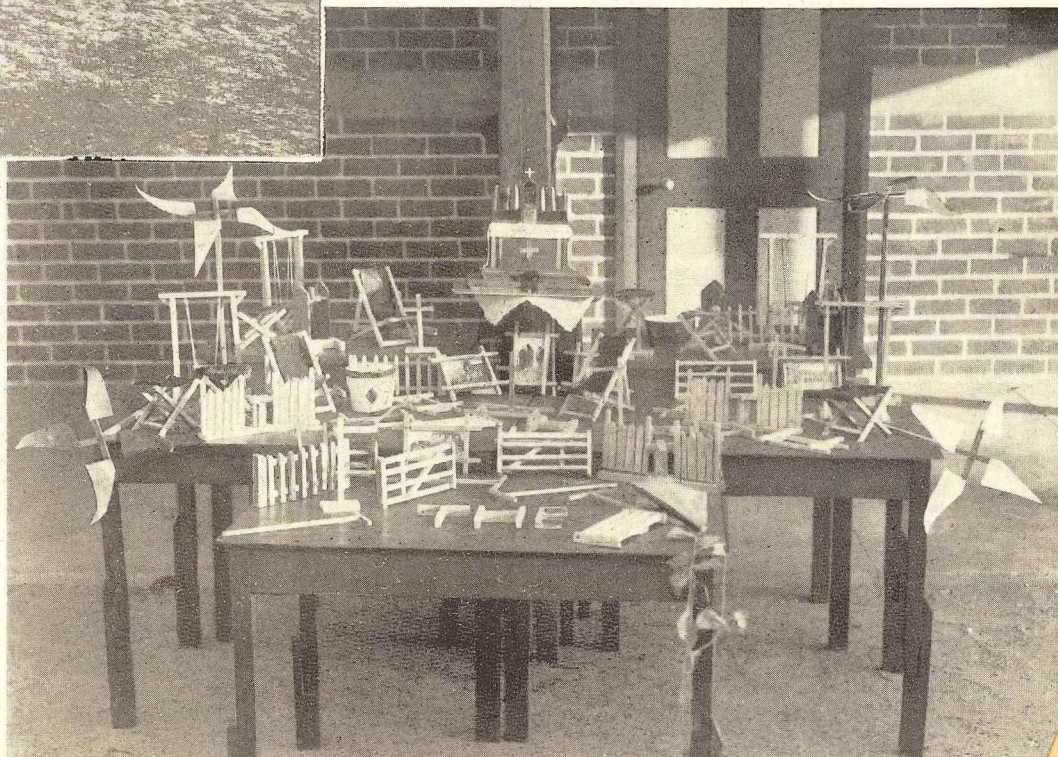


MATRON AND BOYS, JUNIOR ORPHANAGE, CASTLEDARE



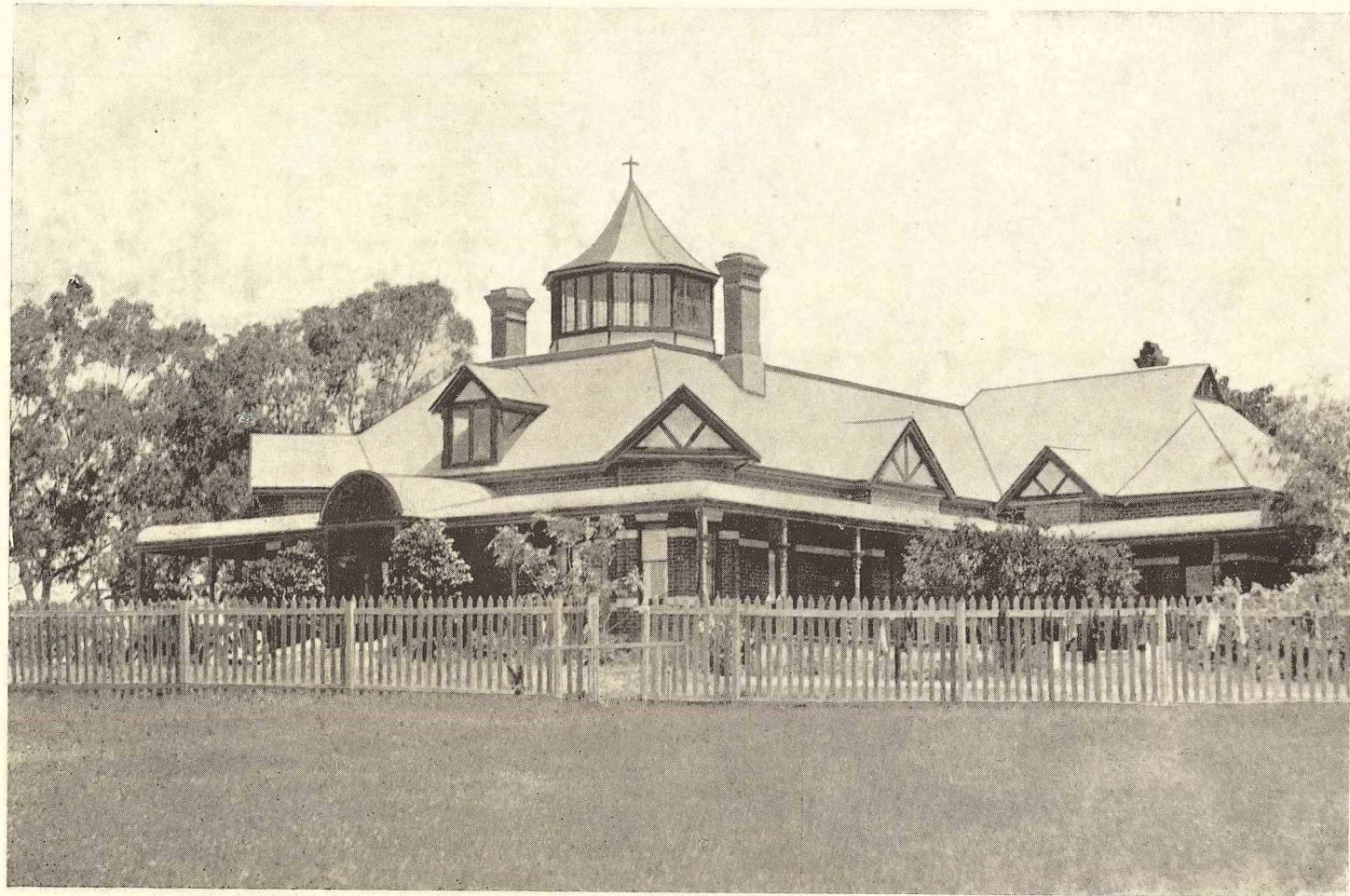


DORMITORIES,  
JUNIOR ORPHANAGE,  
CASTLEDARE



MANUAL ROOM,  
JUNIOR ORPHANAGE,  
CASTLEDARE





BROTHERS' RESIDENCE, JUNIOR ORPHANAGE, CASTLEDARE



Printed by—  
**SERVICE PRINT**  
*City & Suburban Print*  
383 Hay Street, Perth