

St Joseph's Child Care Centre

1970 – 1978

Other Names:

- St Joseph's Crisis Accommodation Centre
- Tarroona Centre
- Tarroona Child Care Centre

Details

St Joseph's Child Care Centre replaced St Joseph's Orphanage (Aikenhead House), opening on 22 February 1970. It was located in Tarroona and run by the Sisters of Charity. The Centre provided cottage accommodation for 30 children in three cottages, and also supervised the Family Group Homes of Villa Maria, Loreto, Carinya, and later, Bimbadeen. In 1976, two of the cottages closed with most children being accommodated in local Sister of Charity's Family Group Homes. In 1978, it became the St Joseph's Crisis Accommodation Centre.

St Joseph's Child Care Centre was on a four acre block of land overlooking the River Derwent. A house already on the site was extended to provide room for the convent, an administrative centre, and the chaplain's accommodation. Three cottages were built to provide accommodation for the children.

Each cottage had a nun supervising, a housekeeper and housed 10 children. The three cottages were called 'Karawatha', 'Bimbadeen', and 'Meyendell'.

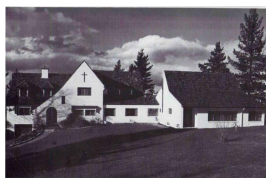
Boys and girls between the ages of 5 and 17 were admitted to the Centre. In *A Piece of the Story* it states that the Sisters attempted to keep siblings together wherever possible.

By 1975, children from the different Homes attended 13 schools, and took part in regular sporting activities and camps. They had weekend placements with families to enable them to experience family life. Once they had grown up, staff at the Centre did not force them to leave but allowed them to adjust gradually to adult life.

In 1976, a government subsidy to St Joseph's Child Care Centre enabled it to appoint a full time Child Care Supervisor to support married couples working as house parents in family group Homes away from the Tarroona site. This led to the closing of Bimbadeen and Meyendell cottages, and opening of a fourth family group home, Bimbadeen, in November 1976.

In 1978, St Joseph's Child Care Centre closed and St Joseph's Crisis Accommodation Centre occupied the site. The St Joseph's site has since been redeveloped as a retirement village, however the convent and chaplain's quarters still remain.

Gallery



Number 26 Channel Highway as St. Joseph's Child Centre, showing front of Convent and Chaplain's Quarters, 1970

Description: This is an image of the convent and chaplain's quarters at St. Joseph's Child Centre in Taroona. It was published in a section of *Taroona 1808-1986: Farm Lands to a Garden Suburb* titled "St. Joseph's Family Support Centre".

More info

Chronology

- St Joseph's Orphanage (1879 - 1970)
 - **St Joseph's Child Care Centre (1970 – 1978)**
 - St Joseph's Crisis Accommodation Centre (1978 - 1999)

Related Entries

Run by

- [Sisters of Charity of Australia \(1838 - current\)](#)
The Sisters of Charity ran St Joseph's Child Care Centre from 1969 to 1978.

Related Organisations

- [Catholic Family Welfare Bureau \(Tasmania\) \(1959 - 1977\)](#)
- [Villa Maria Family Group Home \(1964 - c. 1981\)](#)
- [Loreto Family Group Home \(1966 - 1982\)](#)
- [Carinya Family Group Home \(1969 - 1978\)](#)
- [Bimbadeen Family Group Home \(19 November 1976 - 1980\)](#)

Resources

- Cannell, Josephine, *To the beckoning shores: urged on by the love of Christ*, 2007
- Hanson, Dallas, *Why are they in children's homes : report of the ACOSS children's home intake study*, 1979
- Australian Catholic Social Welfare Commission and the Australian Conference of Leaders of Religious Institutes, [A piece of the story : national directory of records of Catholic organisations caring for children separated from families](#), November 1999

Records

For more information and to access your records, follow the links below:

Records held by other organisations

- [Sisters of Charity Archives \(1879 - 1973\)](#)
- [Records held by CatholicCare Tasmania \(1959 - 1979\)](#)
- [Correspondence Files \(1919 - 1998\)](#)

You can view this page online by visiting <https://findconnect.efront.digital/entity/st-josephs-child-care-centre/>