

# La Perouse Women's and Children's Home

1944 – 1988

## Details

---

The La Perouse Women's and Children's Home was a Salvation Army refuge for women and children that was established at the Old Cable Station at La Perouse in 1944. It closed in 1987.

According to the New South Wales Migration Heritage Centre, the La Perouse Women's and Children's Home was unique:

*Until the late 1970s, this was the only such refuge in Sydney, with many women and their children finding refuge from violent marriages, misfortune and poverty. The refuge remained until 1987.*

The Old Cable Station, a New South Wales Government property, was converted to the Lapérouse Museum and Visitor Centre in 1988, to commemorate the life of the French explorer Lapérouse.

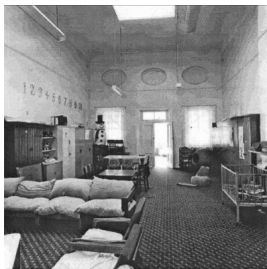
## Gallery

---



**Laperouse Museum, Kamay Botany Bay National Park**

**Description:** This is an image of the building that La Perouse Women's and Children's Home operated in.



**The Instrument Room during the Salvation Army women's and children's refuge occupation, circa 1987 [La Perouse]**

**Description:** This is a copy of an image in the Lapérouse Museum Collection.

## More info

---

### Related Entries

Run by

- [The Salvation Army Australia Eastern Territory \(1921 - 2018\)](#)

## Resources

- Cleland, Sharon, [\*Caring for the Children: A history of institutional care provided by The Salvation Army for Australian children and youth \(1893-1995\)\*](#), August 2012

## Records

---

For more information and to access your records, follow the links below:

### Records held by other organisations

- [Salvation Army Australia, Records of Homes in the former Eastern Territory \(c. 1891 - 1990s\)](#)
- 

You can view this page online by visiting <https://findconnect.efront.digital/entity/la-perouse-womens-and-childrens-home/>