

# Metropolitan Boys' Shelter

1911 – 1983

**Other Names:**

- Metropolitan Boys' Remand Home
- Albion Street Shelter

## Details

---

The Metropolitan Boys' Shelter was established as part of the Children's Court at Albion Street, Surry Hills in 1911. It was a remand home and shelter for boys who were awaiting Children's Court hearings. In 1974 boys aged 18 to 20 were transferred to Minda. The Children's Court and the Metropolitan Boys' Shelter closed in 1983.

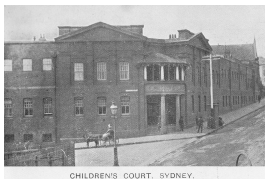
The Shelter was established at The Children's Court on the corner of Albion and Commonwealth Streets, Surry Hills, in 1911. Although the instigator of the Children's Court, Sir Charles K Mackellar, had great hopes that the new court would be airy and light and would reflect the humane intention of the new policies. However the Albion Street building, designed by Government Architect Walter Liberty Vernon, was much the same as other New South Wales Government courthouses. It was attractive on the outside, but gloomy inside. Mackellar was upset that there was no space for children awaiting court hearings to be separated from adults who were being tried in the court for offences against children that ranged from desertion to neglect and abuse.

The accommodation for the boys, which was under the building, was noted to be particularly unsuitable for reformatory purposes.

The courthouse and the shelter closed in 1983. The buildings are now used by a range of social services providers.

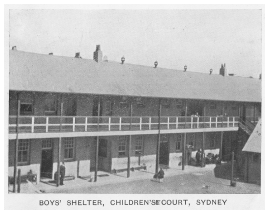
## Gallery

---



**Children's Court, Sydney**

**Description:** This is a copy of an image that appeared in the State Children Relief Board Report for year ended 5 April, 1912. The Children's Court building was newly opened when this photo was taken.



**Boys' Shelter, Children's Court, Sydney**

**Description:** This is a copy of an image that appeared in the State Children Relief Board Report of year ended 5 April, 1912.

## More info

---

## Related Entries

### Run by

- [State Children's Relief Board \(1881 - 1923\)](#)
- [Child Welfare Department, State Government of New South Wales \(1923 - 1970\)](#)
- [Department of Child Welfare and Social Welfare, State Government of New South Wales \(1970 - 1973\)](#)
- [Department of Youth and Community Services, State Government of New South Wales \(1973 - 1975\)](#)
- [Department of Youth and Community Services, State Government of New South Wales \(1976 - 1988\)](#)

### Related Legislation

- [Neglected Children and Juvenile Offenders Act 1905, New South Wales \(1905 - 1923\)](#)
- [Child Welfare Act 1923, New South Wales \(1923 - 1939\)](#)

### Related Organisations

- [Children's Court of New South Wales \(October 1905 - current\)](#)
- [Metropolitan Children's Court \(1911 - 1983\)](#)  
The Metropolitan Boys' Shelter was in the Metropolitan Children's Court and housed boys who were awaiting court hearings.
- [Raymond Terrace Home \(1913 - 1930?\)](#)  
Some boys from Raymond Terrace Home returned to the Metropolitan Boys' Shelter
- [Minda \(1966 - 1991\)](#)  
In 1974, when Taldree opened as a remand centre for junior boys, boys aged 18 to 20 were transferred from the Metropolitan Boys' Shelter in Albion Street to Minda.

## Resources

- Matthews, Bernie, [Reap as you sow](#), Griffith Review: Unintended Consequences, May 2007
- Tenison Woods, Mary, *State and the Child*, Sydney Morning Herald, 2 February 1944
- [Bruce Callaghan interviewed by Gail Winkworth in the Children and the State oral history project \[sound recording\]](#), 30 October 2009

## Records

---

For more information and to access your records, follow the links below:

### Records held by other organisations

- [Departmental Records relating to State Wards, New South Wales \(1918 - current\)](#)
  - [Records held by Surry Hills Children's Court \(1912 - current\)](#)
  - [Depositions \[Metropolitan Children's Court\] \(15 July 1937 - 16 December 1941\)](#)
  - [Metropolitan Boys' Shelter, Albion Street, Sydney. Institutional files \(\[I\] "B"files\) \(1963 - 1973\)](#)
  - [School Files \(1876 - 1979\)](#)
- 

You can view this page online by visiting <https://findconnect.efront.digital/entity/metropolitan-boys-shelter/>