

Charlton Memorial Home

1942 – 1966

Other Names:

- Archdeacon Charlton Memorial Home
- Charlton Boys' Home, Glebe

Details

Charlton Memorial Home, also known as Charlton Boys' Home, was established in Glebe by the Home Mission Society in 1942. It was a Church of England home that primarily dealt with boys who had appeared in Children's Courts, but also took girls. It held up to 40 young people, ranging in age from seven to 18. In 1966 Charlton Memorial Home moved to Ashfield.

The Home was named after Archdeacon Charlton, who a former head of the Home Mission Society. A 1925 *Sydney Morning Herald* article said Charlton home was established for children attending the Children's Court and was for 'child delinquents' and 'those who might become such without proper care and education.'

According to its annual reports, the Home Mission Society ran a chaplaincy at the Children's Courts, supporting non-Catholic children and their families during hearings and providing support to boys and girls who were placed on probation, or sent to reformatories.

In 1944 the Home Mission Society said Charlton was an example of its 'Special Centre Work', which was supporting children appearing before the Children's Courts. The Society stated

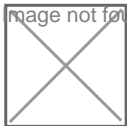
... many of the cases which come before the Court can only be helped by taking them out of the homes in which they have become a social problem.

The Society said that Charlton was open day and night but boys and girls rarely absconded. Children were referred to it by the police, the Child Guidance Clinic and the Court.

Charlton began in Avona Avenue in Glebe, but expanded to take in neighbouring properties at the corner of Forsyth Street and Glebe Road (Charlton Way). By 1959 it had its own printery and workshop.

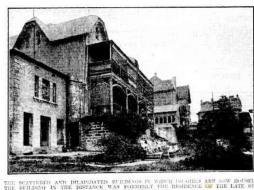
Charlton Boys' Home Glebe was sold in 1966. Charlton moved to Ashfield, to what had been Milleewa. Homes at Bowral and Castle Hill were moved to Ashfield in 1970. Ashfield was converted to Robinson Home in the late 1970s.

Gallery



Cover of Anglican Home Mission Society 'Action'

Description: This is a copy of the cover of the Anglican Home Mission Society's 'Action' magazine, featuring an article about the purchase of "Milleewa" for the Charlton Boys' Home.



C. of E. Girls' Homes at Glebe Point, for the transfer of which to Carlingford an appeal has been launched.

Description: This image shows the building known as 'Avona' when it formed part of the Church of England Girls' Home in Glebe. Girls from the Home can be seen sitting on the steps outside the building. This building and its grounds later became the Charlton Memorial Home. This image was published in The Sydney Morning Herald on 11 May 1928. The description reads: "The scattered and dilapidated buildings in which 150 girls are now housed. The building in the distance was formerly the residence of the late Sir George Wigram Allen."

More info

Chronology

- **Charlton Memorial Home (1942 – 1966)**
 - Charlton Boys' Home, Ashfield (1966 - 1970s)

Related Entries

Run by

- [Home Mission Society of the Anglican Diocese of Sydney \(1857 - 1997\)](#)
The Homes and Hostels Committee of the Home Mission Society ran Charlton Boys' Home at Glebe.

Related Organisations

- [Avona Hostel \(1947 - c. 1962\)](#)
Avona Hostel was situated next to Charlton Memorial Home.
- [Charlton Boys' Home, Bowral \(1960 - 1970\)](#)

Resources

- [Glebe Care Homes for Children](#), The Glebe Society, 23 June 2013

Records

For more information and to access your records, follow the links below:

Records

- [Anglicare Children's Homes, Foster Care and Out-of-Home Care Records \(1932 - 2010s\)](#)
- [Correspondence files, single number series with 'B' \[Child Endowment\] prefix \(1904 - 1974\)](#)
Item B385 of the Child Endowment correspondence files relates to Charlton Memorial Home

You can view this page online by visiting <https://findconnect.efront.digital/entity/charlton-memorial-home/>